

**School Fish by Ladybug**



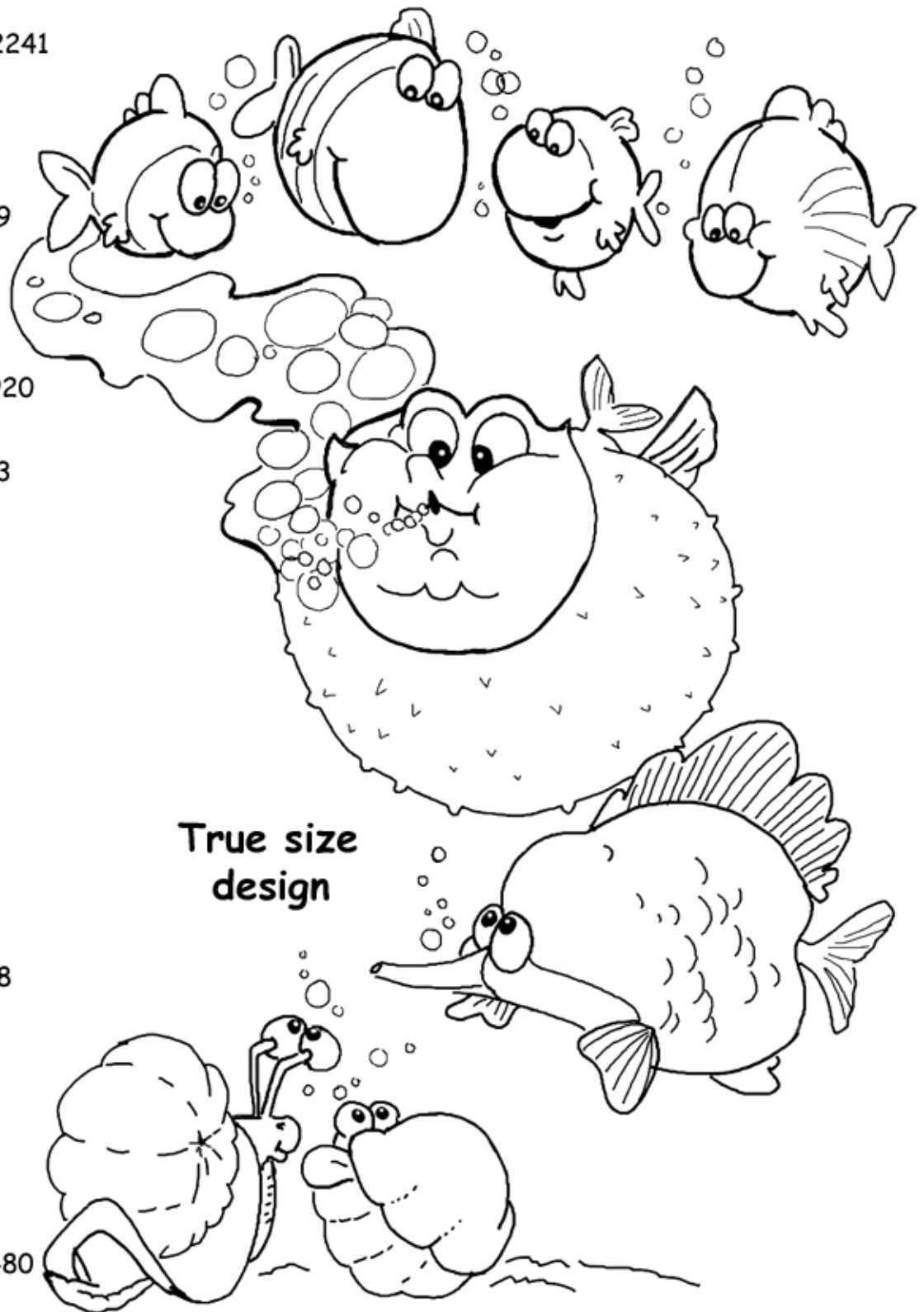
*Ladybug*

# School Fish by Ladybug

All the colors shown are standard colors, but to be honest I quite often mix the colors, since Plaid has a wide selection of pure pigments available.

## Palette by Plaid FolkArt

-  Apple Orchard #2241
-  Lime Yellow #478
-  Sunny Yellow #509
-  Tangerine #627
-  Autumn Leaves #920
-  Burnt Sienna #943
-  Light Blue #402
-  Blue Ribbon #719
-  Red Violet #636
-  Patina #444
-  Teal #405
-  Passion Punch #318
-  Fawn #237
-  Pure Black #479
-  Titanium White #480
-  Burnt Umber #462



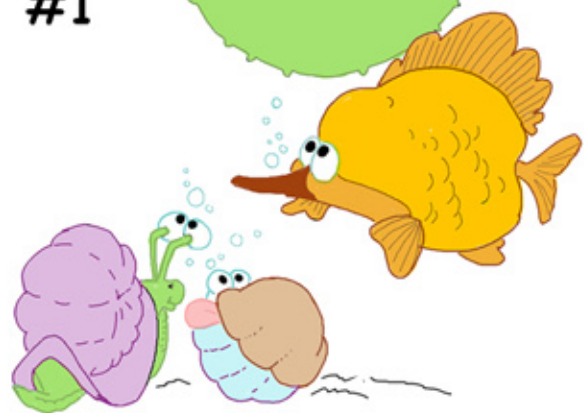
Ladybug©2007

# School Fish by Ladybug



#1

#2



#3

#4



# School Fish by Ladybug

## Note for designer:

I certainly had fun doing up this design for the Treasure Boxes. It is a take off from a design in my "Strokes of Fantasy" set, but so perfect to use as a school of fish. A subject that kids can relate to, plus it's so colorful, making it a good choice. In fact, I have painted this design on several boxes, and each time it comes out looking different, simply by changing the background.

While it may appear to use lots of colors for this, it is also a great way to use up some of those bottles with just a little bit of paint left over from other projects. Too much to throw away, but not enough to do a big project...so why not use up for a worthy cause.

**Palette** (colors by Plaid FlokArt and given with the line design)

## Brushes:

I prefer to work with flats and liners most of the time, since this design will require a little bit of blending to give it the dimensional effect. I use large brushes, simply because I learned a big brush can do more when it comes to blending. However, the size of a brush has to be one that you can control in the space you are to paint. So for me to give you a size is wrong, since you are the only one who can decide what you size you need to achieve the end result.

You will need both flats and #1 liner. A #4 round might come in handy for blocking in colors.  
Synthetic, sponge- foam or large hog hair brush for sealer  
Large flat for background basecoat

## Other Supplies:

Tracing paper, stylus, and graphite paper (a color that will show up on background)  
Blending gel or Glaze Medium to aid for blending  
Water-based sealer  
FolkArt Sparkles (Hologram Glitter #267)  
Sharpie Black permanent pen (extra fine tip) or tech pen #0.1 point

## Backgrounds:

I am showing two in the final photo page and one on the first page. It is a matter of choice. or in one case working with the dark blue the photo box came in. (Saves painting the lid.) The colors of the fish don't change, so choice what you like.

**TIP:** If you want a neat water look to the background try base coating it solid with a light blue. Allow this to dry. Take a darker blue and apply large strokes over the lid going from one side to the other (horizontal). While the paint is still very wet, lay a sheet of clear cellophane on it and blot lightly at the same time you gently move it slightly to the right, now lift straight up. It will give you that underwater current look to it. This might be something you want to test out first on another surface prior to the box lid to get the motions needed to achieve this end result.

Basecoat in your choice of background color, making sure that it covers the whole lid. Edges of lid can be done in a darker or lighter color, choose one. I might suggest a bright yellow-gold, since goldfish are popular with kids and it is the color of most school buses. Suggested lid colors: any blue, aqua, blue-greens, white, or cream.

# School Fish by Ladybug

## Note:

I will list the fish and each color used on it. I know many never read the instructions anyways, but in case you do...this will make it easier to follow along. (Look on the worksheet for the numbers.)

### #1

Body color is a Sunny Yellow, Tangerine is floated to the left side and a wash of it under the eyes. Stripes of Autumn Leaves can be added to give more personality. Outlined with Burnt Sienna and given the fish black eyes with white reflective dots.

### #2

Same as the above, but without the stripes. Add Autumn Leaves glaze if desired.

### #3

Apple Orchard body with Sunny Yellow around the mouth. White ovals for eyes with black dots and white reflective highlights. Shade with darker green to the right side (back of body) and lower fins. A wash of orange is placed below the eyes and a slight white highlight across the upper lip, with black inside the mouth.

### #4

Light Blue body with Blue Ribbon blended from the back to the front of the body. Has a white mouth area that is shaded with blue and a hint of Red Violet. Red Violet is glazed over the top of fish.

### #5

Try a different green than the small fish...maybe more olive looking. Head is a darker value of the same green (about 2 shades darker). Cheeks and eyes are white with two black beady eyes, with white reflection dots. Body is shaded with a darker green floated on the bottom side and a glaze Burnt Sienna over it and under the head as a cast shadow. Green used on body is glazed to the outside of the cheeks as shown, with a hint of Passion Punch to the upper cheeks. Detail lines are in dark green. (Those aren't just air bubbles he is making....giggle, giggle.) But this is something that kids think is so smart to do.

### #6

Golden yellow body, shaded with Burnt Sienna (Dry brush the sienna in the front part of the body as shown.) Black eyes with white reflected dots. Add a few scale lines with Burnt Umber.

### #7

Snail has a light lavender shell and a Apple Orchard body. Black eyes with white reflective dots. Shade the snail with Red Violet and Teal. Give the shell a highlight of soft white the same as you will be using on the small crab. (Mix white with Red Violet to get a light lavender (1:3)

### #8

Crab's body is Light Blue, shaded with dark blue and a glaze of Red Violet over it. Shell is a light brown or tan with Burnt Sienna floated on to shade it. Tongue is Passion Punch with a hint of Autumn Leaves on it. Eyes the same as the others.

Sea sponge is just daps of grey, aqua, blues and white applied with a sea sponge. Sand is done with the same sponge using Fawn and Burnt Sienna. Bubbles are done with Patina and Teal used to shade them, white to highlight.

Be sure to seal the lid with two good coats of water base varnish.

Ladybug

[www.ladybugcreations.com](http://www.ladybugcreations.com)

# School Fish by Ladybug

Close up view of the final design

Background has been applied with a large hog bristle brush, and by triple-loaded.

1-Base coated with blue.  
2-When dry triple loaded brush is dragged across horizontal with large strokes. Colors are allowed to melt together while wet. Later a dark blue is floated near some of the fish to add more depth.

See more idea on next page.



Ladybug

# School Fish by Ladybug

Photos of boxes painted



Ladybug©2007